



SOFT-PCE-CAL

Version No: 2.0.5.2

**PCE Calibrator
Data Retrieval Utility**

PCE Instruments

Email: info@pce-instruments.com

Web: <http://www.pce-instruments.com>



This page intentionally left blank

Table of Contents

1. Introduction	4
2. Software Installation Guide	4
2.1 System Requirement.....	4
2.2 Steps to install SOFT-PCE-CAL Software and PCE Calibrator USB Driver.....	5
2.3 Uninstall SOFT-PCE-CAL Software	13
3. Software Operation Guide	14
3.1 Periodic Log.....	15
3.2 Key Press Log.....	16
3.3 Help	16
3.4 Supporting Calibrators	16
4. Troubleshooting	17
5. Revision History	21
6. Contact Information	22

1. Introduction

SOFT-PCE-CAL is a utility for transferring Data Logging results from PCE Calibrator to a personal computer (PC). The results can be viewed using Microsoft Excel®. This Document gives user basic idea about installing and using SOFT-PCE-CAL software.

2. Software Installation Guide

2.1 System Requirement

Before you install the application verify that you have at least the following:

Hardware

Computer Processor:	Pentium III/Celeron 866 MHz (or equivalent) or later (32-bit) Recommended (Pentium 4M (or equivalent) or later (32-bit)) Pentium 4 G1 (or equivalent) or later (64-bit).
Memory:	1 GB RAM (recommended 2 GB) and 1.8GHz processor or better.
Hard Disk Space:	5 GB of available hard disk space.
Screen Resolution:	Resolution should be set at 1280 x 768 Pixels (recommended 1366 x 768).
Color Palette:	Software contains 16-bit color graphics. It requires a minimum color palette setting of 16-bit color.

Software

Operating System:	Windows 10/8.1*/7 SP1** Windows Server 2012 R2* Windows Server 2008 R2 SP1**
--------------------------	--

* Software installs VC2015 Runtime and .NET 4.6.1. Windows 8.1 and Windows Server 2012 R2 require Microsoft updates to support these items. Refer to Microsoft KB2919442 and KB2919355 for more information about how to install these updates.

** Software is signed with a SHA-256 certificate. Windows 7 SP1, Windows Embedded Standard 7 SP1, and Windows Server 2008 R2 SP1 require Microsoft updates to support SHA-256. Refer to Microsoft KB3033929 for more information about how to install this security update.

Additional Software Requirement:







Acrobat Reader 10 or higher version.
Microsoft Office 2016/2013/2010/2007/2003.
Microsoft .NET Framework 4.6.1 or higher version required.

NOTE: The following list describes restrictions for using software on windows:

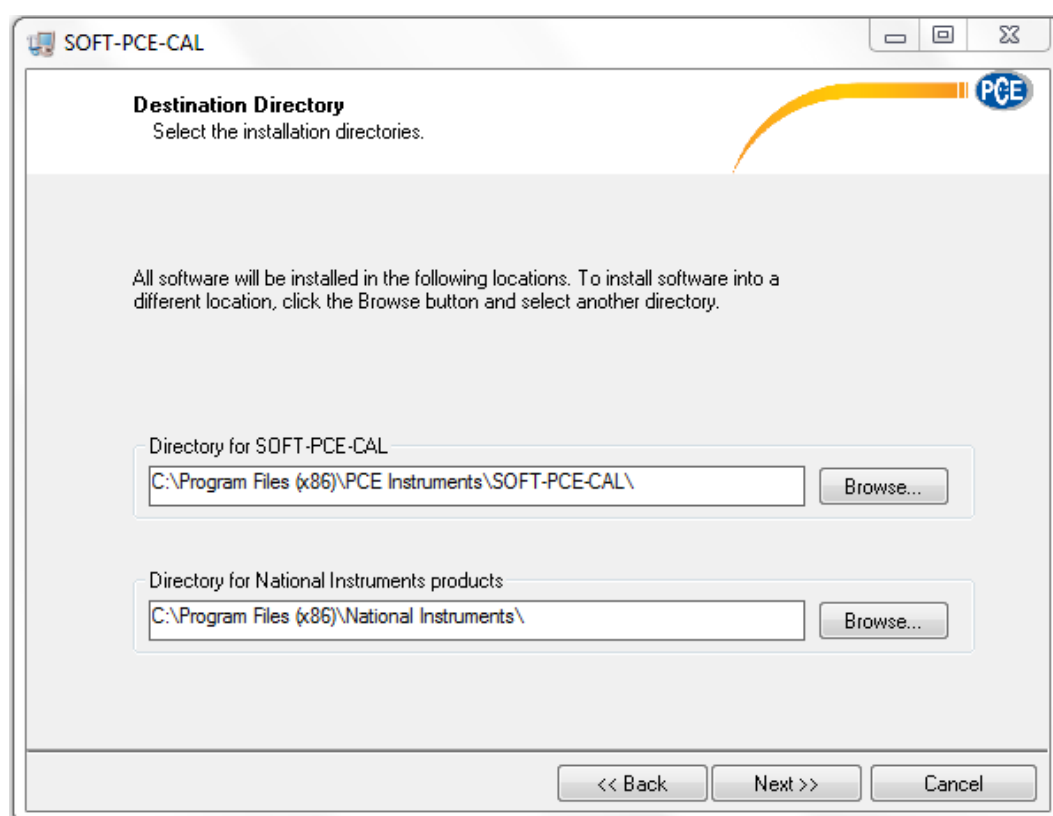
- You cannot access software using a guest account on windows.
- Although the software is designed to work with the windows operating systems listed above, software cannot guarantee operation on OS's no longer supported by Microsoft support life cycle policy.
- If Windows Update is enabled, the installation process might hang if Windows Update interferes with the installation of Microsoft Visual C++ Redistributable Package.
- If you purchased this software, use the installation media that shipped with your purchase to install this software.
- Software does not support and will not install or run on windows 2000 / NT / Me / 98 / 95 / XP / windows vista / Windows 7 RTM (with no service pack).

2.2 Steps to install SOFT-PCE-CAL Software and PCE Calibrator USB Driver.

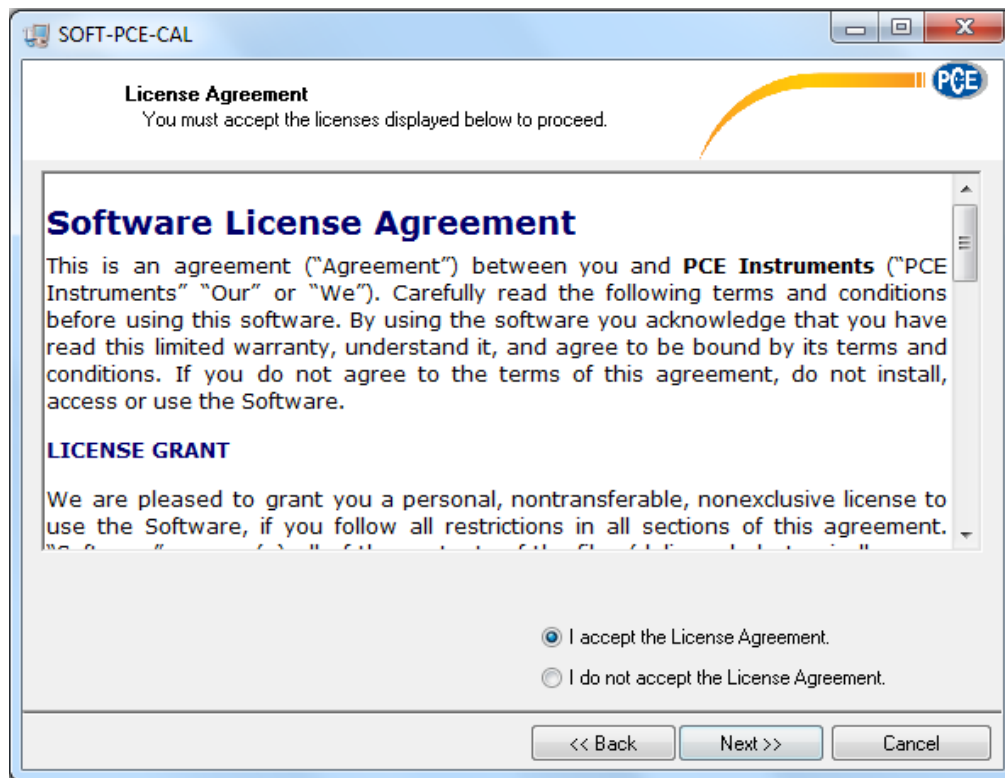
- 1) To install the SOFT-PCE-CAL software from a drive, insert the installation source disk into the CD drive, **setup.exe** file is available in the **Setup\Volume** folder as shown in below image.

	bin	03-10-2017 12:25	File folder	
	license	03-10-2017 12:25	File folder	
	supportfiles	03-10-2017 12:25	File folder	
	nidist.id	29-09-2017 10:07	ID File	1 KB
	setup	25-10-2016 16:30	Application	1,430 KB
	setup	29-09-2017 10:07	Configuration sett...	23 KB

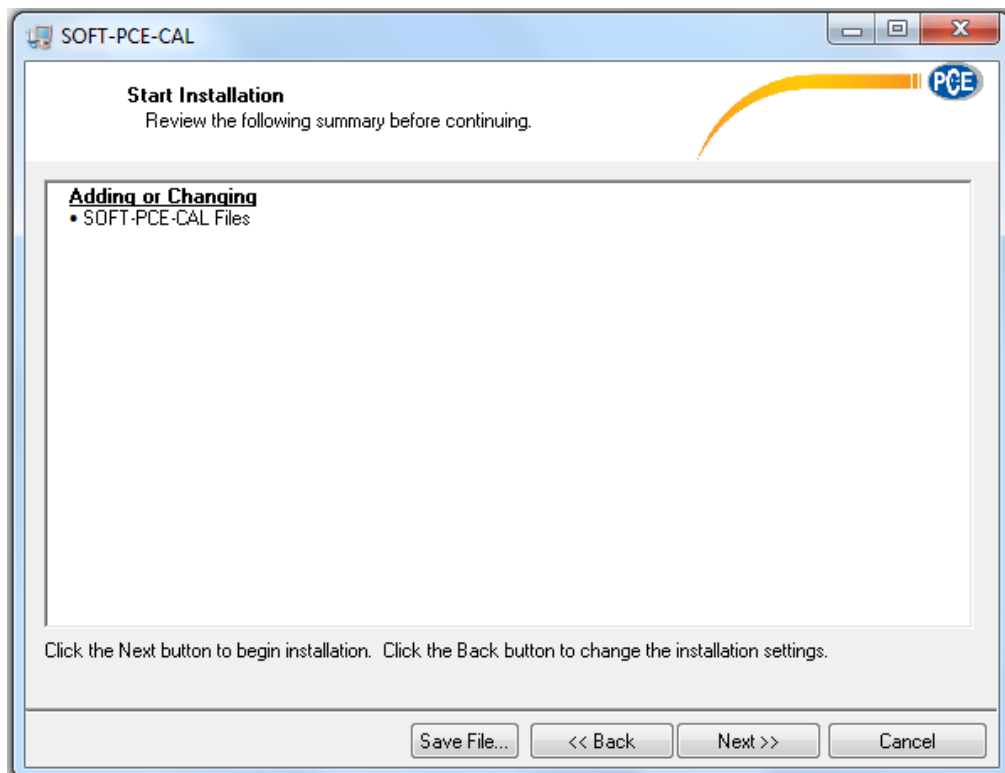
- 2) After running application setup, below screen will appear. The user can change the installation folder, if required. It is recommended to keep it at the default and then click on the next button.

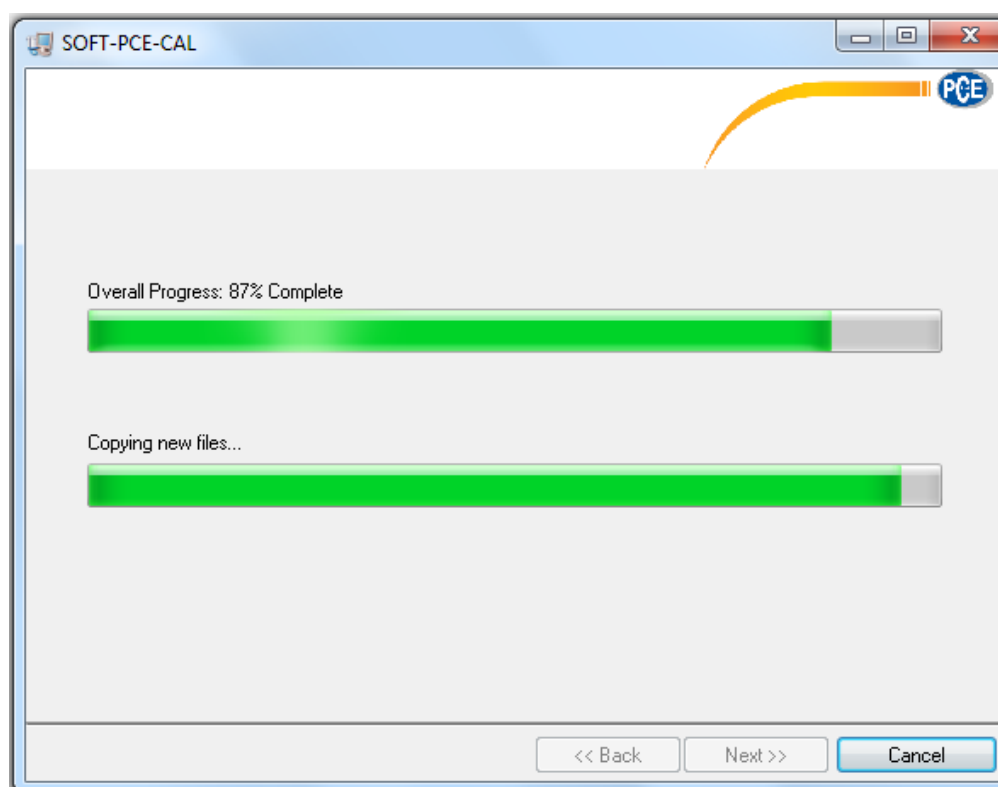


- 3) After that it will ask to accept *Software License Agreement* and NI software license agreement. Read the license agreement and accept it.



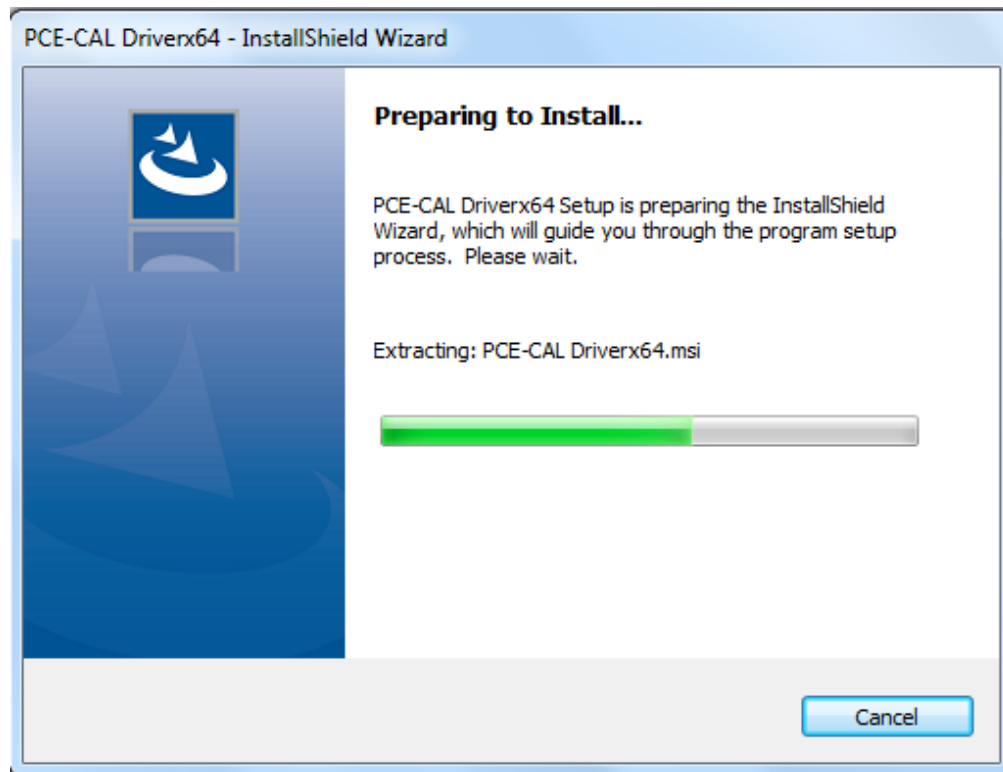
- 4) After that click on the next button, window will appear as shown below. Again click on the Next button and start the installation as described in below images.



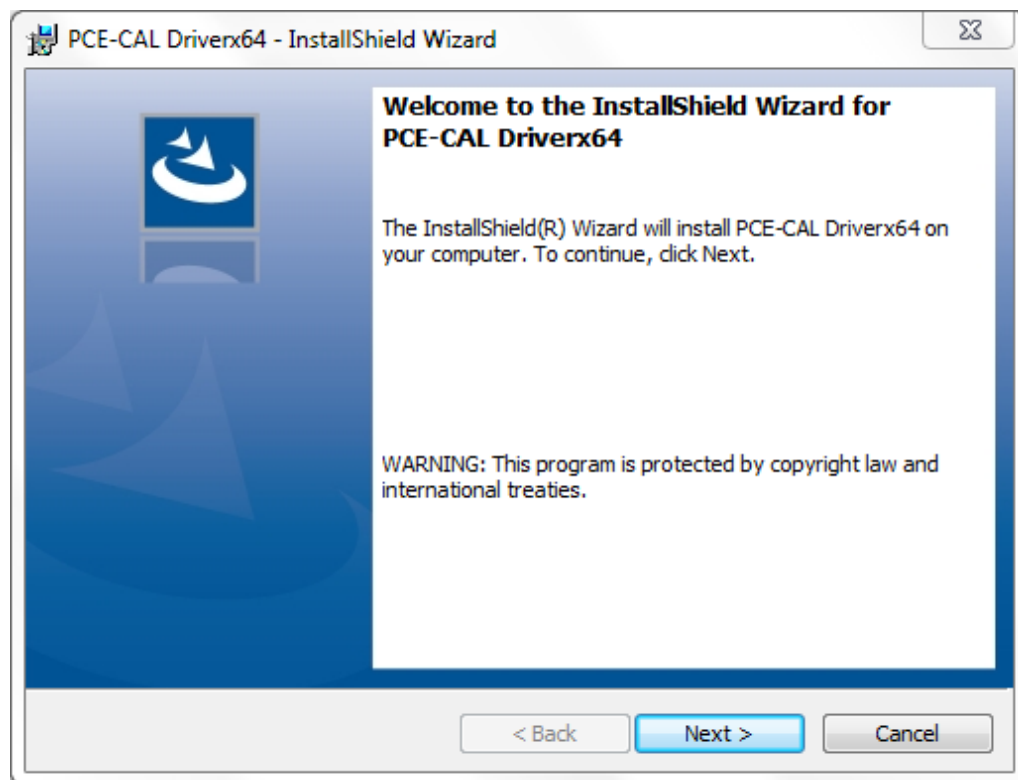


- 5) Again click on the next button. Now SOFT-PCE-CAL Tool installation is completed.

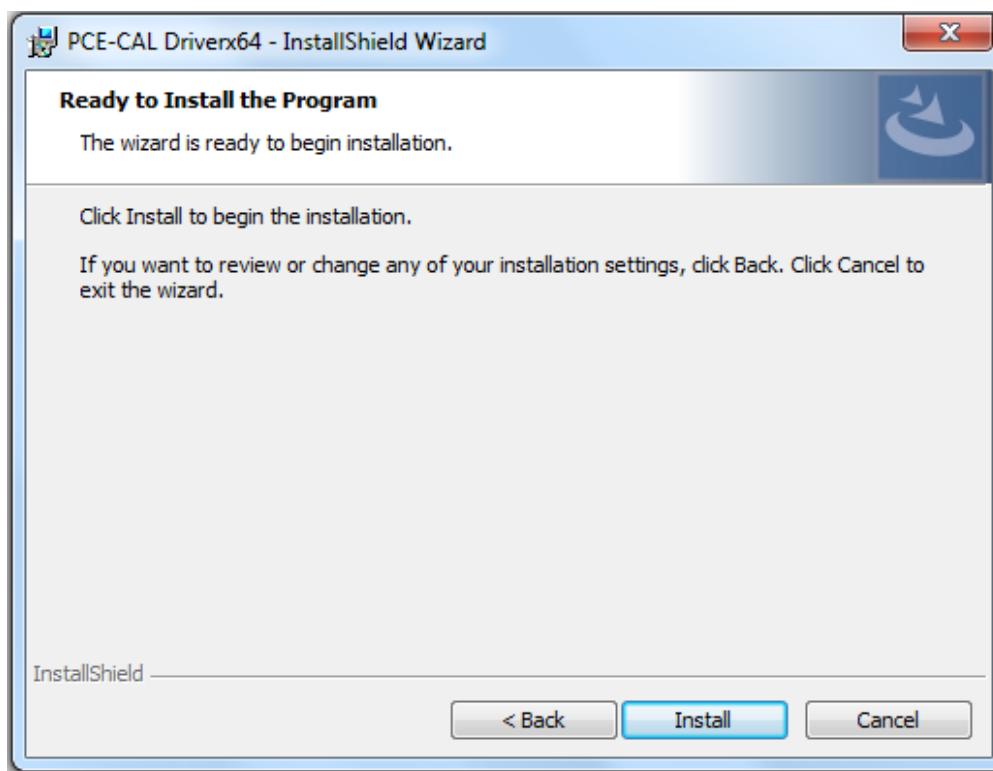
- 6) After that, setup program will install PCE Calibrator USB Driver Installation as per that below screen will appear.



- 7) Click next, to proceed the installation procedure.

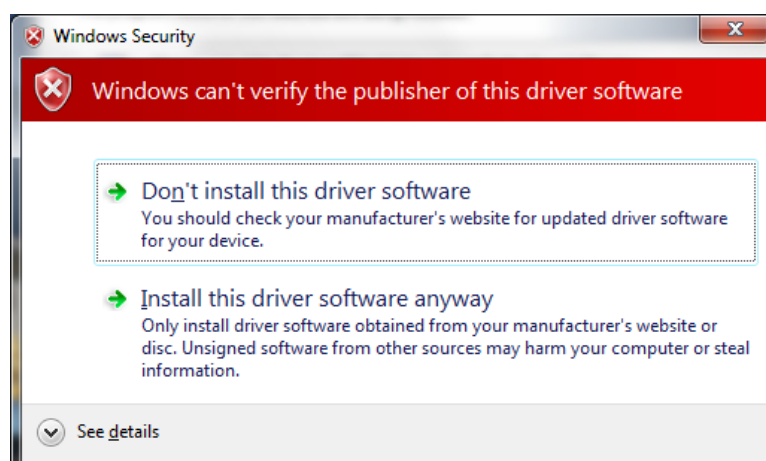


- 8) After that It will be ready for the installation of the Driver.
Click Install to proceeds further.

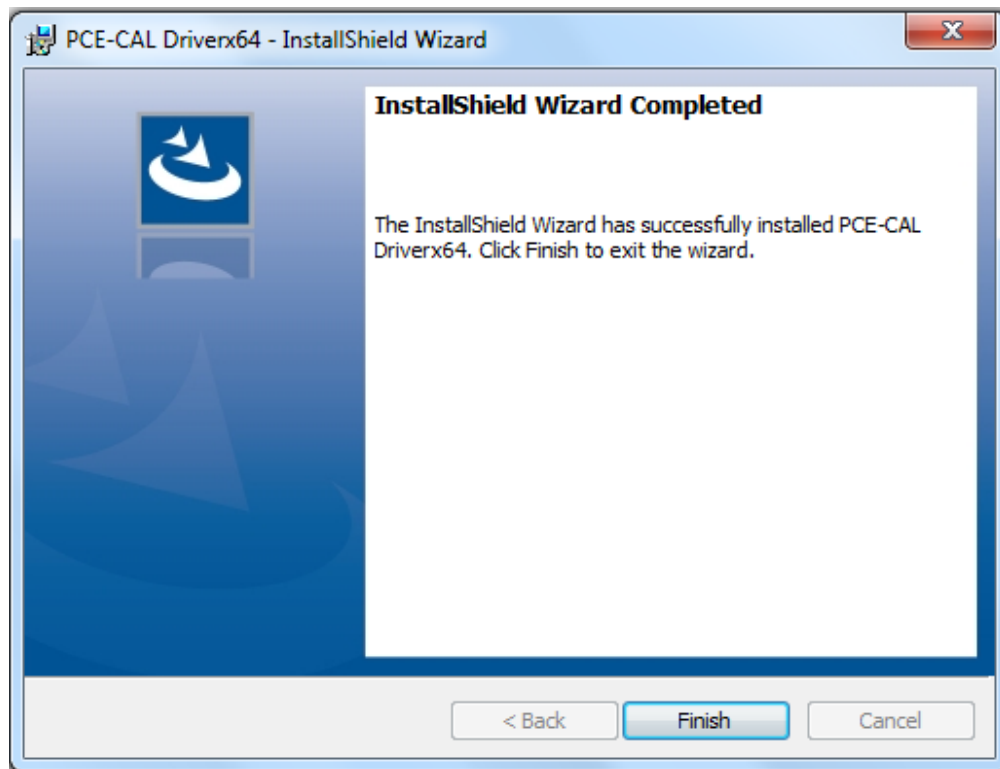


- 9) In between of installation, “Windows Security” Dialog box would appears as below image.
Please Click on the “**Install this driver software anyway**” at promoting the below dialog screen image over the running installation.

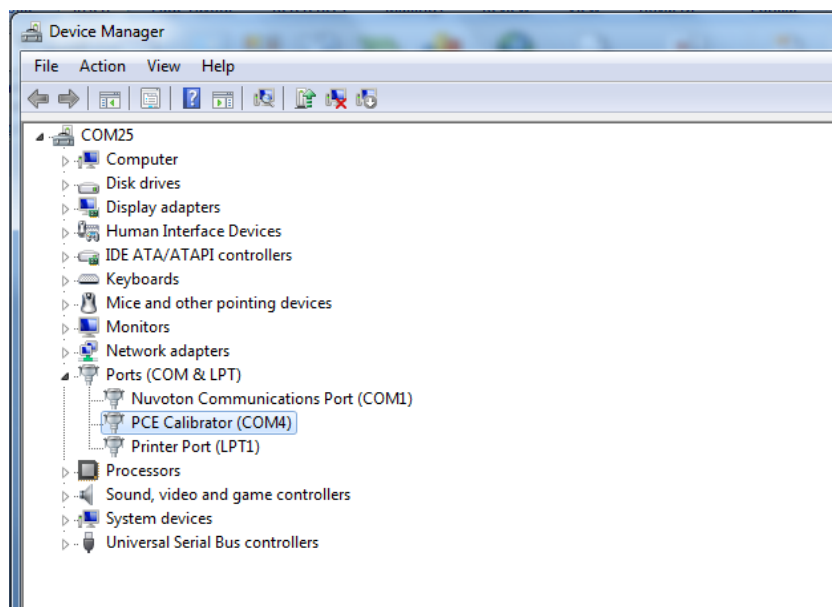
Note: If user clicks on “**Don’t install this driver software**” button on the dialog screen “Windows Security” then Driver would not install on respective PC/Laptop.



10) Press finish over the below screen.

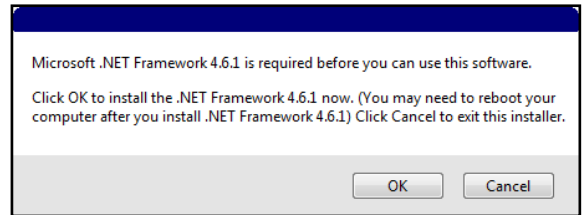


11) After pressing Finish over the above screen you could see the COM Port assign for the PCE Calibrator under Device Manger after attaching the calibrator at anytime, as below screen image.

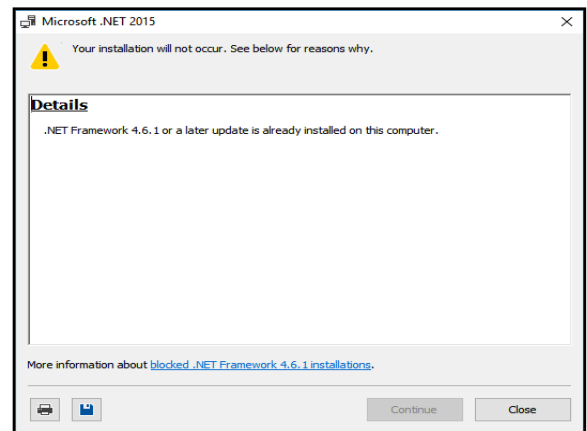
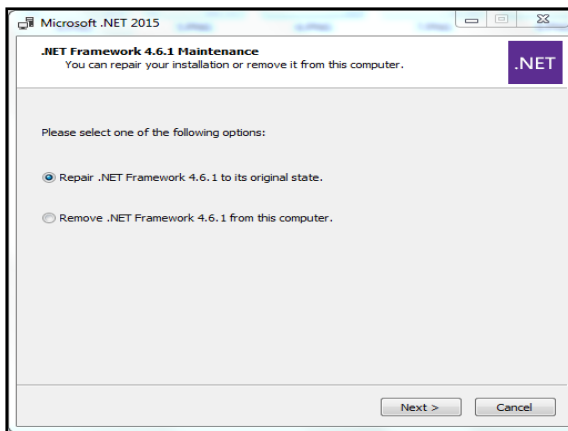


12) **Installing Microsoft .NET Framework 4.6.1**

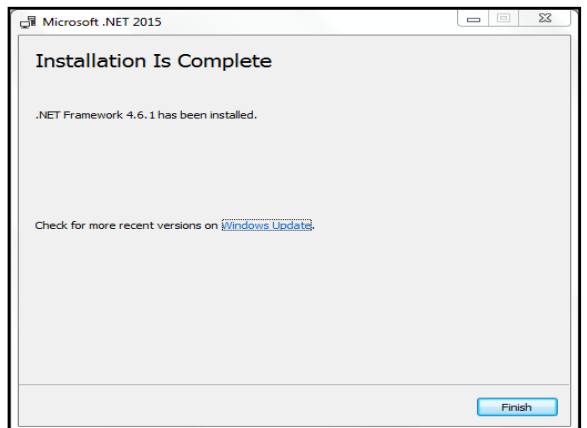
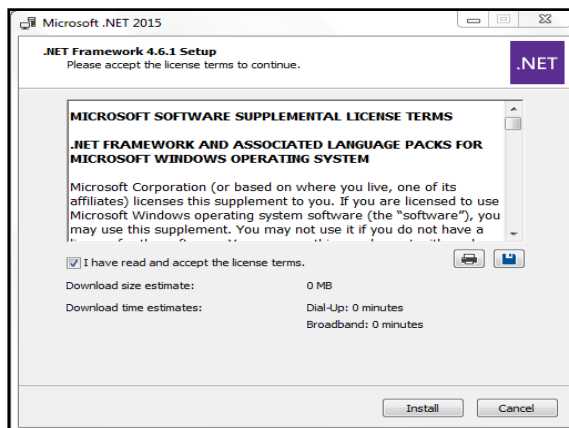
Now driver installer setup will install .NET Framework 4.6.1. User need to select **OK** to install .NET Framework or **Cancel** to discard.



- If the .Net 4.6.1 Framework has already been installed and you attempt to run the install .Net 4.6.1 Framework, a window asking to repair or remove the .Net 4.6.1 Framework will appear. It is recommend to select the **Cancel** button when this page appears. If the higher version of .NET Framework is present in the client PC, then it will automatically proceed to the next level OR may be promote as a warning as shown. It is recommend to select the **Cancel** button when this page appears. If user click **OK** button, setup will execute and extract to a suitable place.



- Installer will appears Microsoft software license term. Read the license, accept it, and click on **Install**. When the Installation Is Complete screen appears, click **Finish** to exit the wizard.

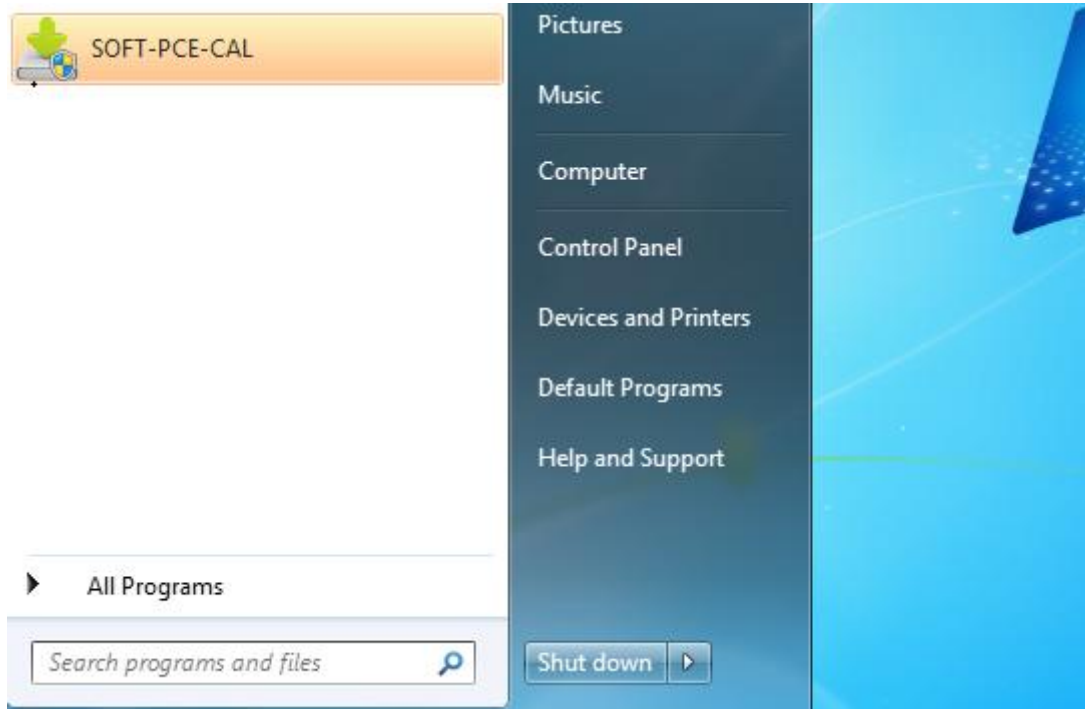
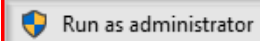


- 13) When the installation is finished it will ask to restart the system .Click on the restart button.

- 14) To begin, launch the software by simply double clicking the desktop icon, or clicking the icon in the All Programs in the Start Menu. If application shortcut will not show as right image with administrator access, you have to right click on it if you use a mouse and keyboard device. If you use a touch screen, just



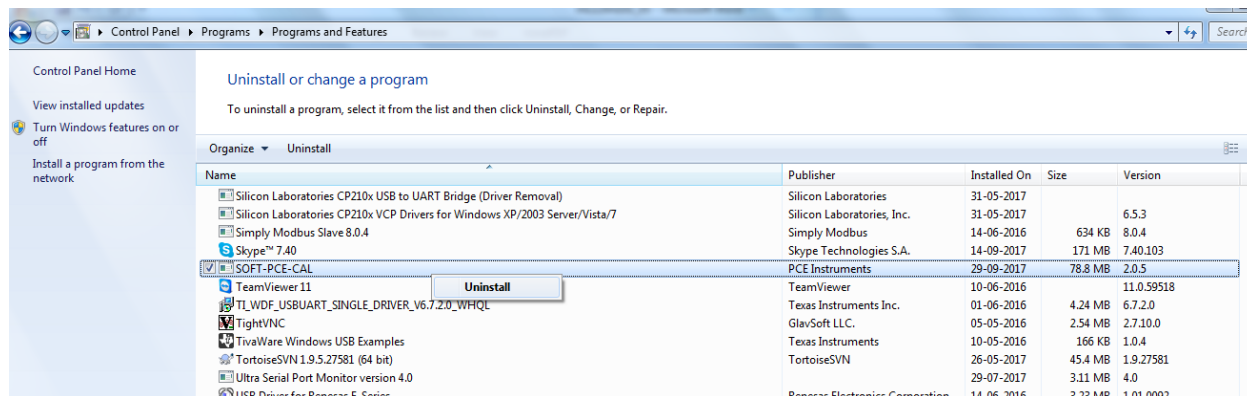
press on the shortcut and hold. You should be able to see, an option that allows you to **run as administrator**. If you run the application from an account without administrator permissions, the *UAC* prompt will ask you to enter the administrator password. If you don't provide the password, the program will not be launched.



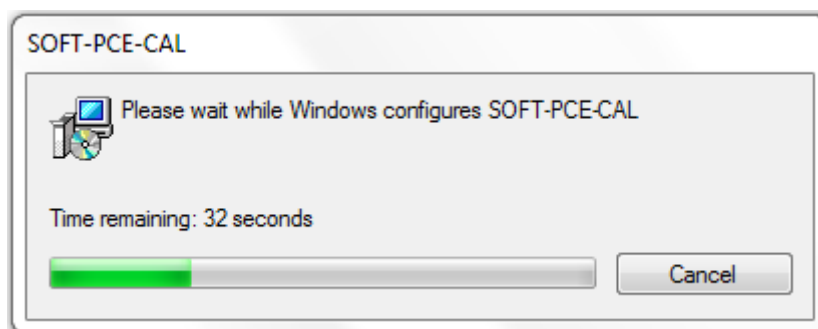
2.3 Uninstall SOFT-PCE-CAL Software

This section of the manual is only to those who are upgrading from the previous software version to new SOFT-PCE-CAL software. If you are installing the software for the first time, then start at section (Installation-Installation Guide).

1. From the Control Panel, open up the “Add/Remove Programs” screen.



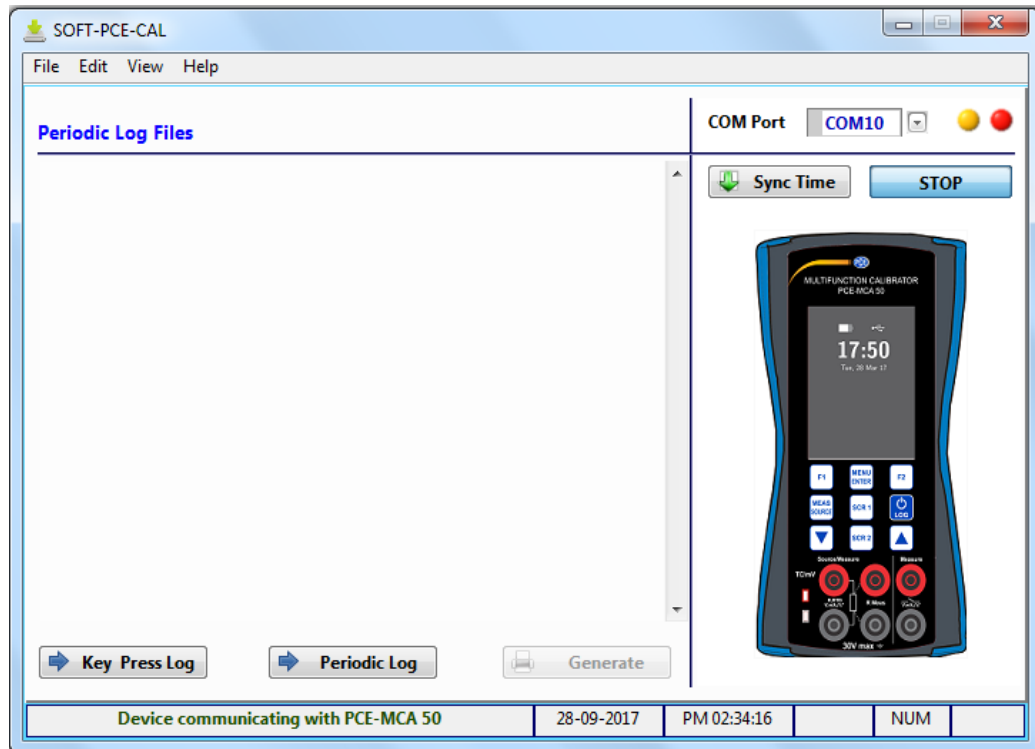
2. Remove the “SOFT-PCE-CAL” software program. Also remove all software programs that start with “SOFT-PCE-CAL”.



3. Close the “Add/Remove Programs” screen.
4. Restart the computer.

3. Software Operation Guide

The software starts with below screens.



First select the right COM port from the available COM ports list. If the device is detected by PC and right COM port is chosen two circles at the top right start blinking.

The software shows the picture of connected device.

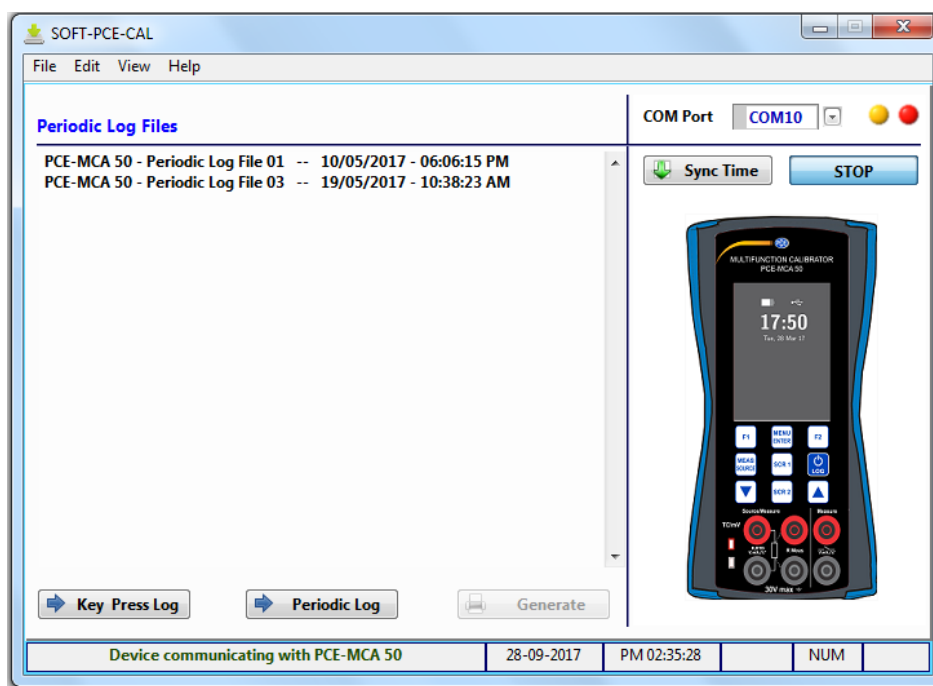
Date/Time can be sync with PC Data/Time by pressing "**Sync Time**" Button.

There are mainly four tabs in the software.

- | | | |
|------------------|---|--|
| 1. Periodic Log | : | To Download Periodic Log Files stored. |
| 2. Key Press Log | : | To Download Key Press Log Files stored. |
| 3. Help | : | View Help regarding the SOFT-PCE-CAL software. |
| 4. About | : | Some information regarding device. |

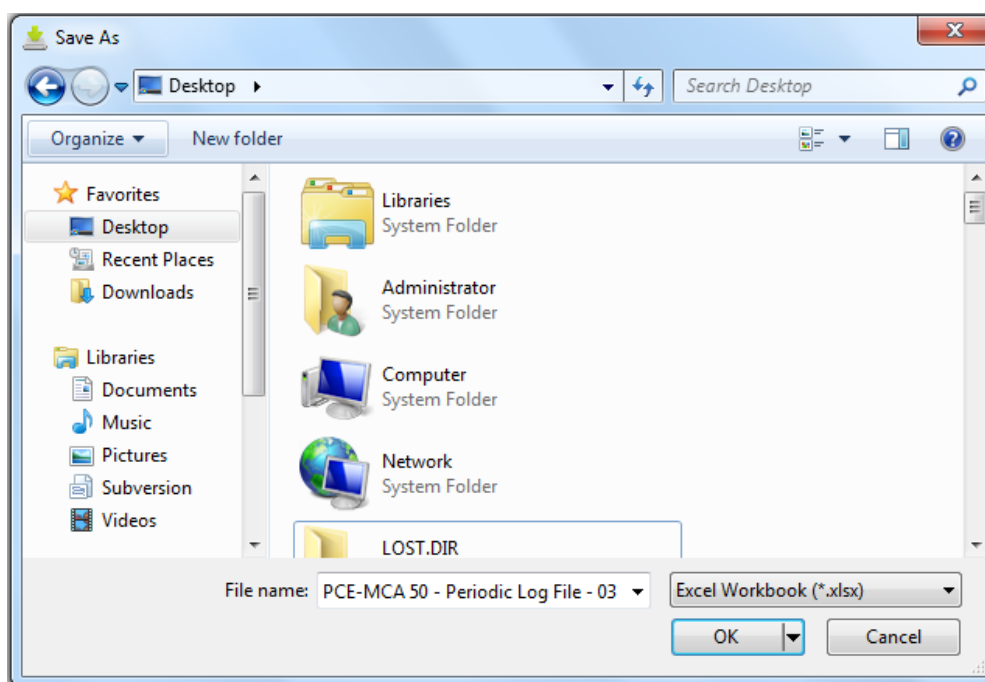
3.1 Periodic Log

When clicked on Periodic Log tab this software scan device for Log File Stored in the device. If any file available it will shows the list of available file and if no files available it will show the message that *"No File(s) found...!!"*



Select one or more file that you want to download, double click on it (It will turns red) and click **"Generate"** button to create MS-Excel file.

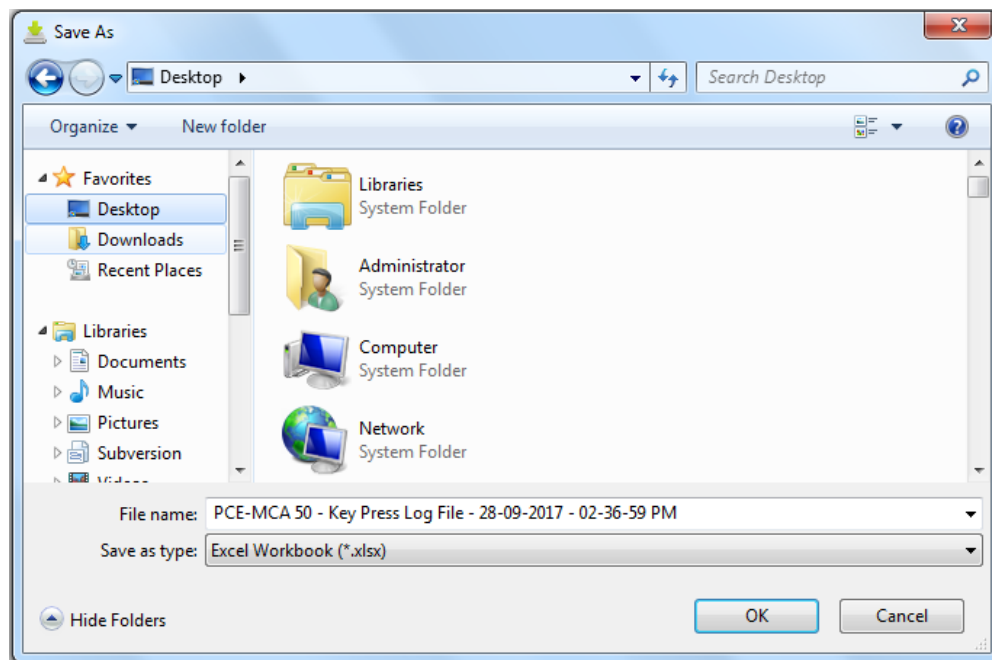
User can select whether to open automatically saved log file or not by **"Open Excel after Generation"** option from Edit Menu.



Browse to the Folder in which you want to save the Log File and Click on “**OK**” button to save.

3.2 Key Press Log

When clicked on Key Press Log tab this software scan device for Log File Stored in the device. If any log available it will generate the Log file and ask for saving it. If no files available it will show the message that “No Log(s) found...!!”



Browse to the Folder in which you want to save the Log File and Click on “**OK**” button to save.

3.3 Help

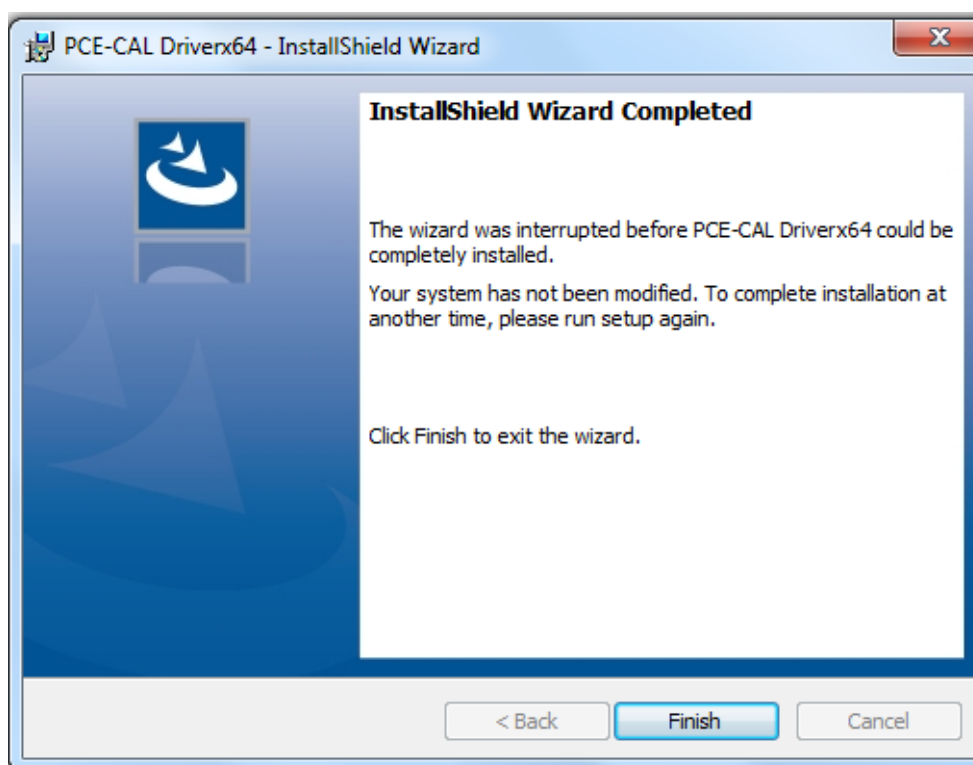
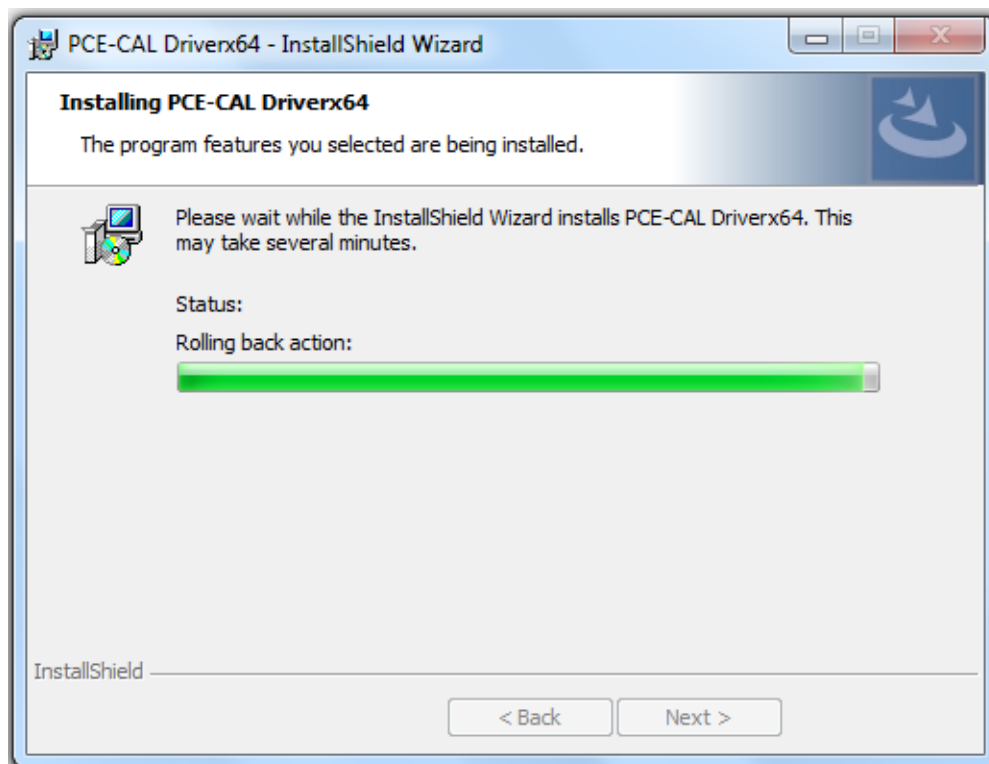
When clicked on Help tab it will open the User Guide of SOFT-PCE-CAL Software.

3.4 Supporting Calibrators

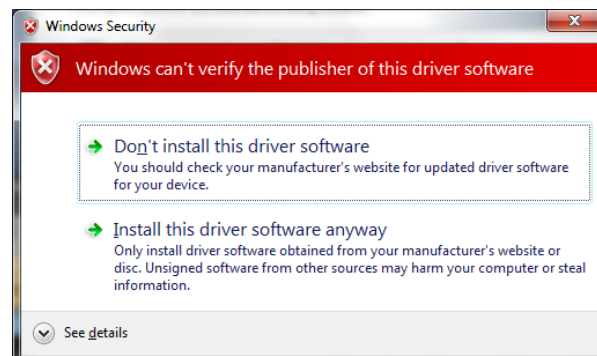
SOFT-PCE-CAL would supports wide range of PCE Calibrators as PCE-LOC 20, PCE-TTC 30, PCE-RTD 20 & PCE-MCA 50.

4. Troubleshooting

Problem Description: PCE Calibrator USB Driver Roll Back Problem as illustrated in below Screens.



Probable Reasons: In Windows 8, 8.1 and 10, Windows didn't allow the Unsigned Drivers to install in the computer OR if you press "**Don't install this driver software**" in Windows Security Dialog Screen.



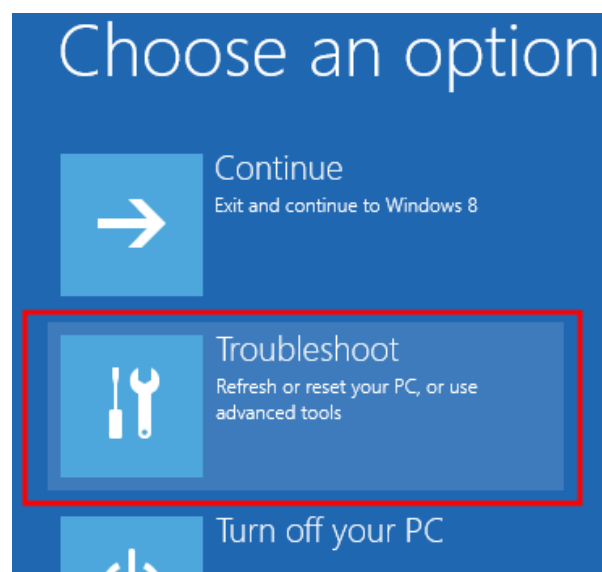
Solution: Windows 8 / 8.1 / 10 by default will not let you install unsigned drivers. In order to install an unsigned driver, you can follow the steps shown below to start Windows 8 / 8.1 / 10 in "**Disable Driver Signature Enforcement**" mode.

For Windows 8 / 8.1 / 10:

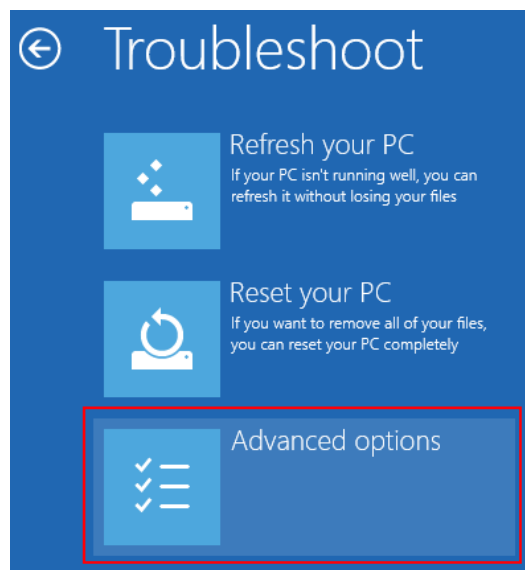
- 1) Hold down the **SHIFT** key  while you click Restart.



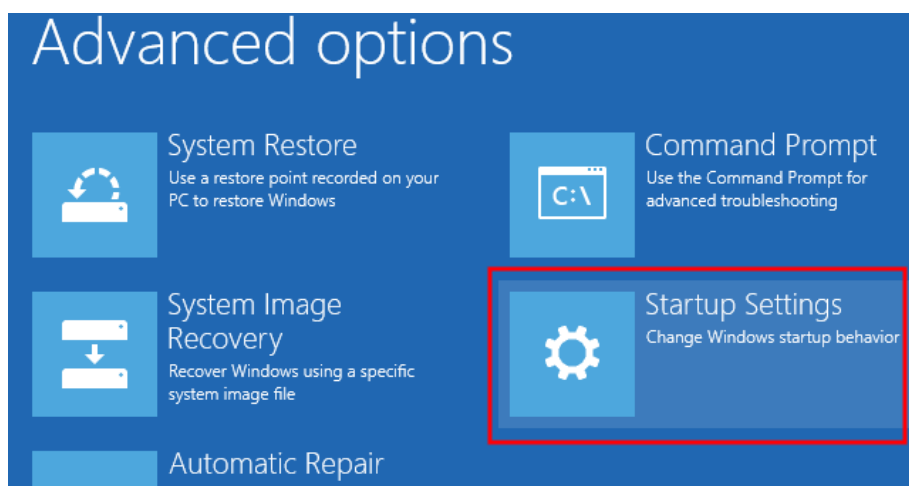
- 2) Click **Troubleshoot**



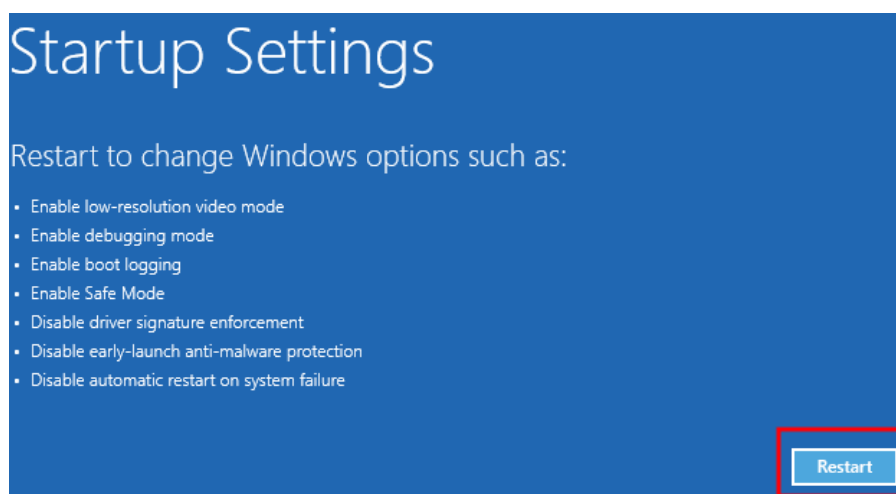
- 3) Click **advanced options**.



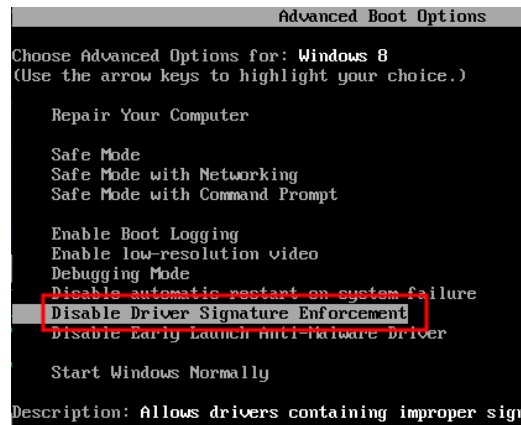
- 4) Click **Startup Settings**.



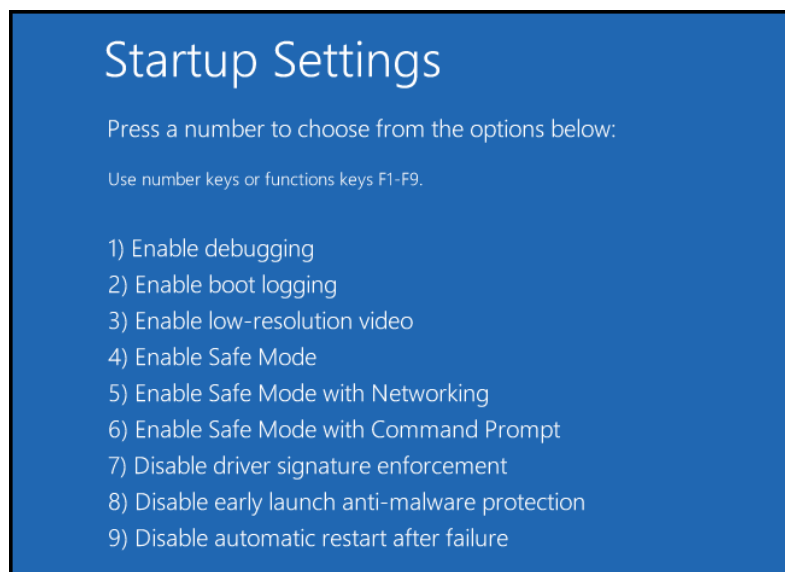
- 5) Click the **Restart** button, this will restart the PC.



- 6) For Windows 8 below illustrated screen would appear, choose the **Disable Driver Signature Enforcement** and hit the Enter key to start Windows.



- 7) For Windows 8.1 / 10. You will be given a list of startup settings that you can change. The one we are looking for is “Disable driver signature enforcement”. To choose the setting, you will need to press the F7 key.



- 8) Now Rerun the Installation of SOFT-PCE-CAL. You should now be able to install the driver needed.

5. Revision History

Version Number	Date	Detail of Change.
SOFT-PCE-CAL V 2.0.5.2	September 28, 2017	Initial Release

6. Contact Information

For further information described in this manual, please contact at PCE Instruments email:

E-mail: info@pce-instruments.com